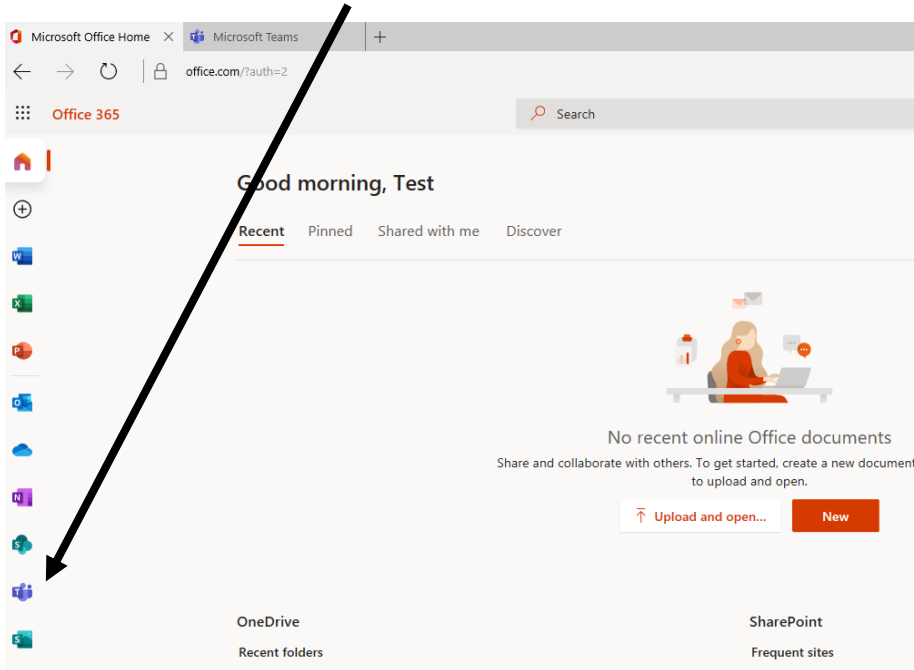


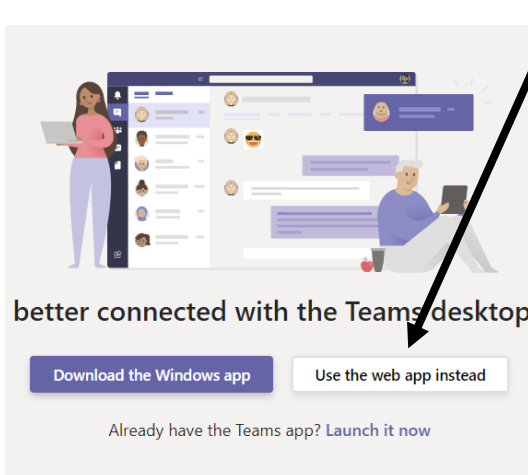
# Accessing and submitting classwork in Teams



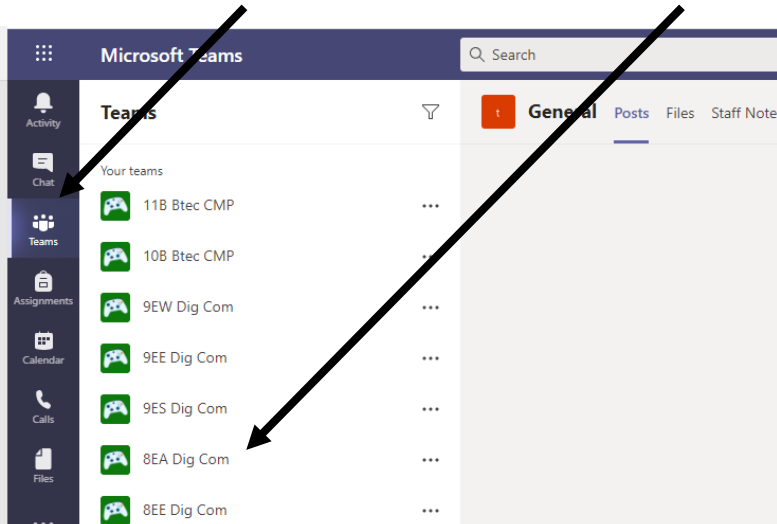
## 1. After logging into Teams



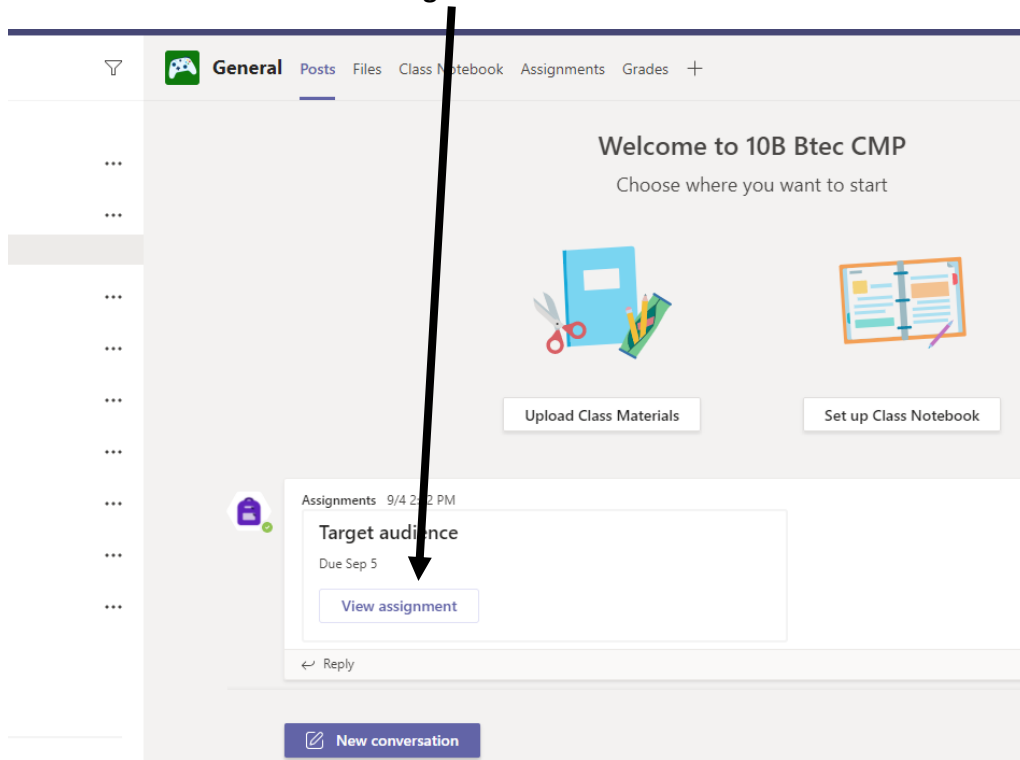
## 2. If this page displays you can use the web app



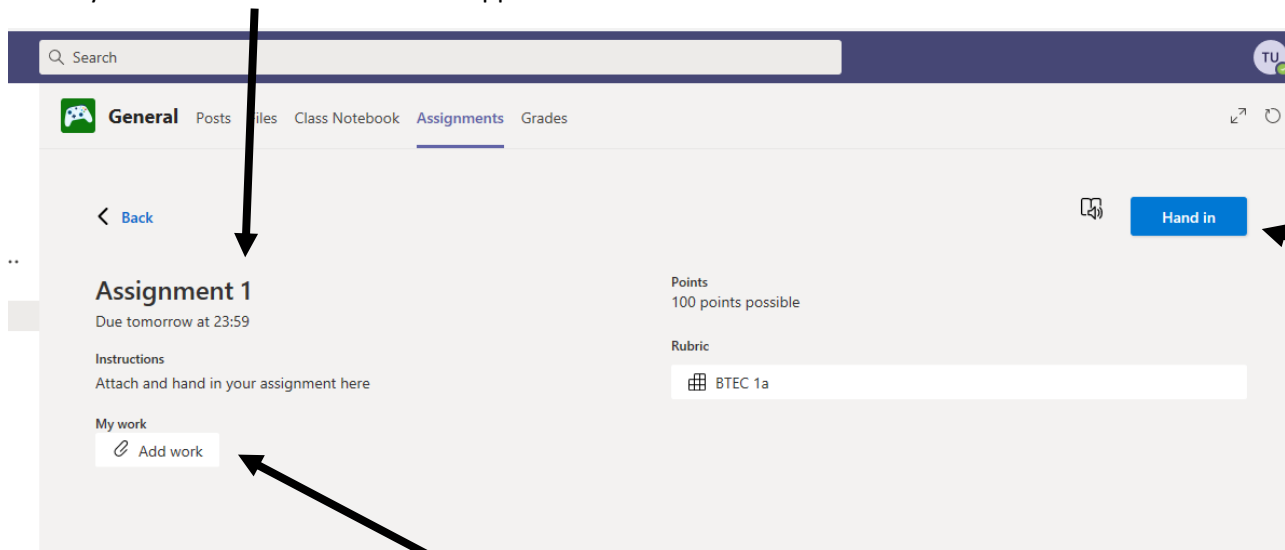
## 3. Click on Teams to show your classes then the name of your class



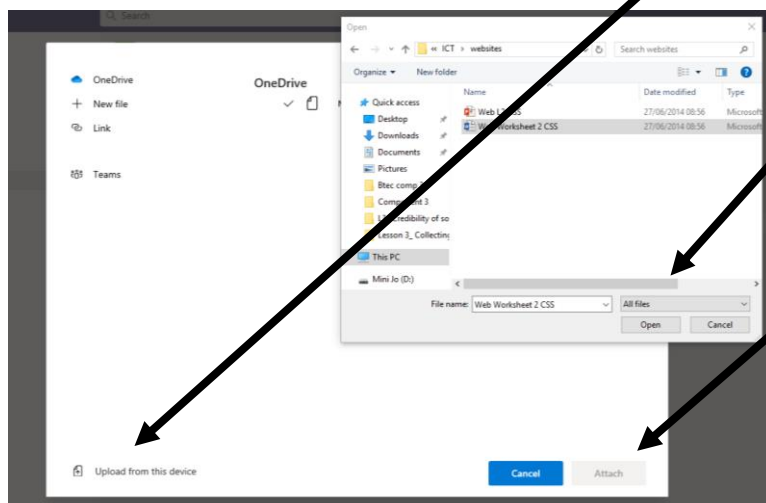
4. You can then click on **view assignment** to see the work set



5. Any instructions and due date will appear here



6. To hand in work click **Add work** then **upload from this device** and **open** your chosen document before attaching it.



7. Finally, click **hand in**